

## Specification

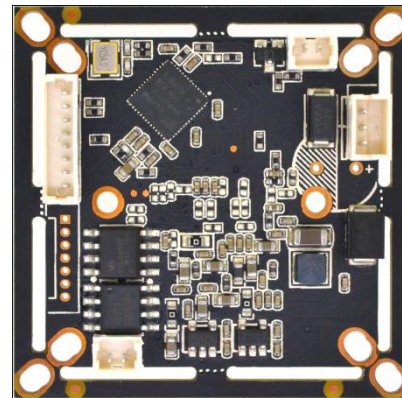
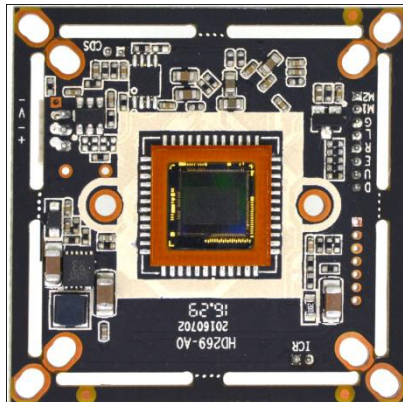
**1、 Name: 3MP AHD Module**

**2、 Model: RS-HD269-A0 series (3MP 2-in-1 output)**

**3、 Technical characteristics:**

- 3. 1、 Image sensor Aptina AR0330,Output AHD/TVI 3MP/1080P/720P/960H,Effective resolution is up to 2048\*1536;
- 3. 2、 OSD menu supports 12 different languages; with strong light inhibition/privacy protection, BLC/DPC, 2D noise reduction function;
- 3. 3、 Adopt Nextchip 2470H DSP, with OSD function (mirror image, color/ white-black, PAL/NTSC);
- 3. 4、 AGC type, day-night effect is distinct, various day-night modes can be switched by OSD menu Support D-WDR
- 3. 5、 Support UTC, 2-in-1, switched by OSD, Enhancement adjustment supported by OSD
- 3. 6、 Power (600W) &Video (2KV) dual-lightning protection design, OSP antioxidant PCB, size 32\*38 dual-border.

**4、 Product picture:**

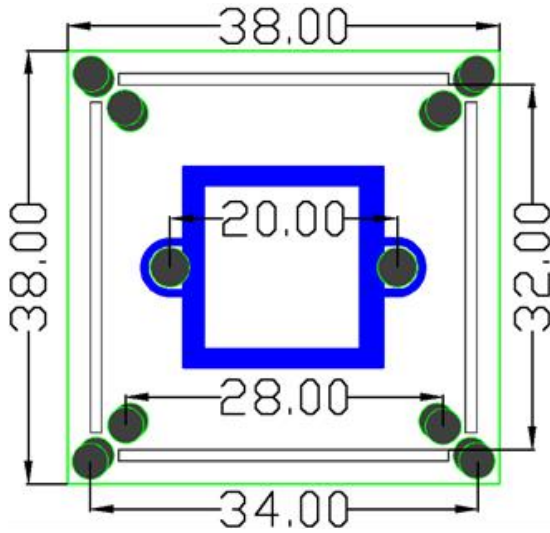


**5、 Product parameters:**

Image Sensor	1/3 AR0330
Resolution	2048 (H) × 1536 (V)
Effective pixels	3.15M Pixels
Signal system	PAL/NTSC (switched by OSD)
Day-night mode	External (Default)/Auto/Color/White&Black (switched by OSD)
S/N Ratio	≥41dB
Minimum illumination	0.01LUX
BLC	AUTO
(AES)Auto electronic shutter	AUTO/ 1/50 (1/60) -1/50,000sec
AWB	AUTO
IR control input voltage	OFF (DC 0V) / ON:DC 3V-8V
OSD language (12)	English/ Simplified Chinese/Traditional Chinese /German /French /Italian/ Spanish/ Polish/ Russian/ Portuguese/ Dutch/ Turkish
Video output	AHD/TVI 3MP/1080P/720P/960H
Video record occupation	1min≈24MB (4mm lens)

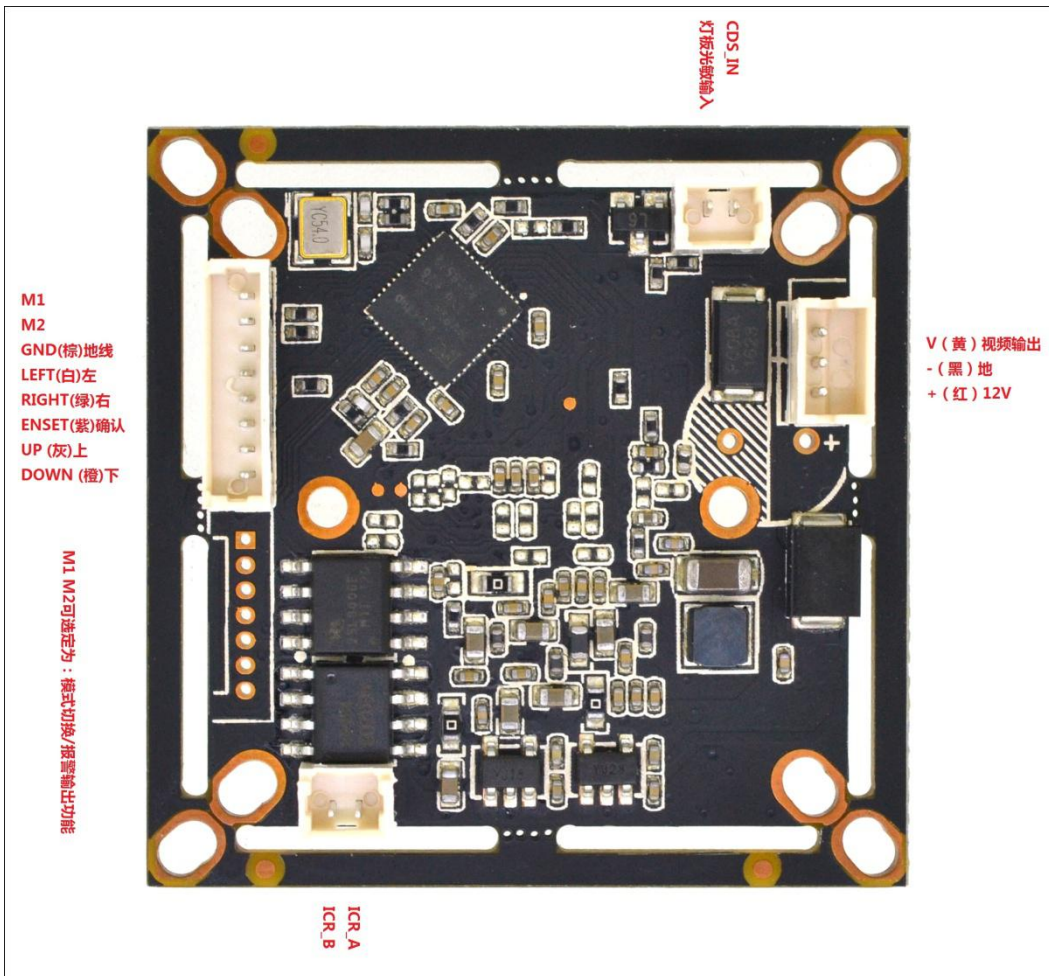
Working Voltage	DC12V/62mA $\pm$ 6mA (Wide voltage 5V-40V)
Working environment	-20°C ---- 50°C

**6、 Product structure& wiring definition diagram:**



Term: ICR\_A/B: IR-CUT

CDS\_IN: IR LED input



## 7. Product structure description

(1) RS-HD269-A0 The power connector can support both 1.5\*3pin (default) and 1.25\*4pin

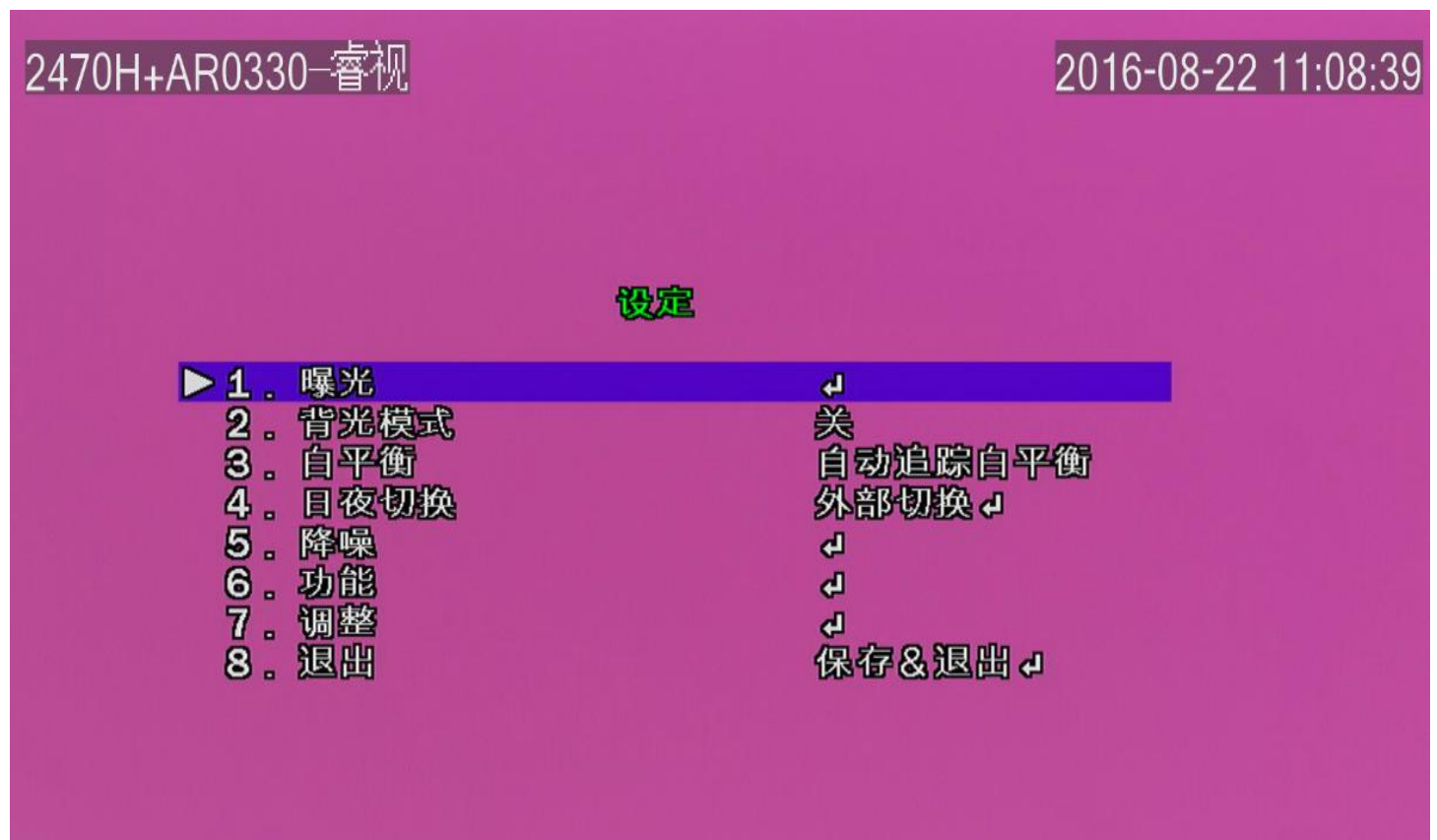
### 8、 OSD Function description:

(1) PAL/NTSC: Enter into OSD menu, Enter into option 7 (Adjust), then go into option4 (Output Mode), Choose option 2 (frame rate) to switch Pal/NTSC. 25fps is Pal (default), 30fps is NTSC. Repeat to switch NTSC to Pal system.

(2) 2-in-1 Switch:

Enter into OSD menu, enter into option 7 (Adjust), then go into option 4(Output Mode), Choose option 1 (Format) Press right button once (press shortly) to change to TVI, press left button to return to AHD. And press Save before exit. (The default is AHD).

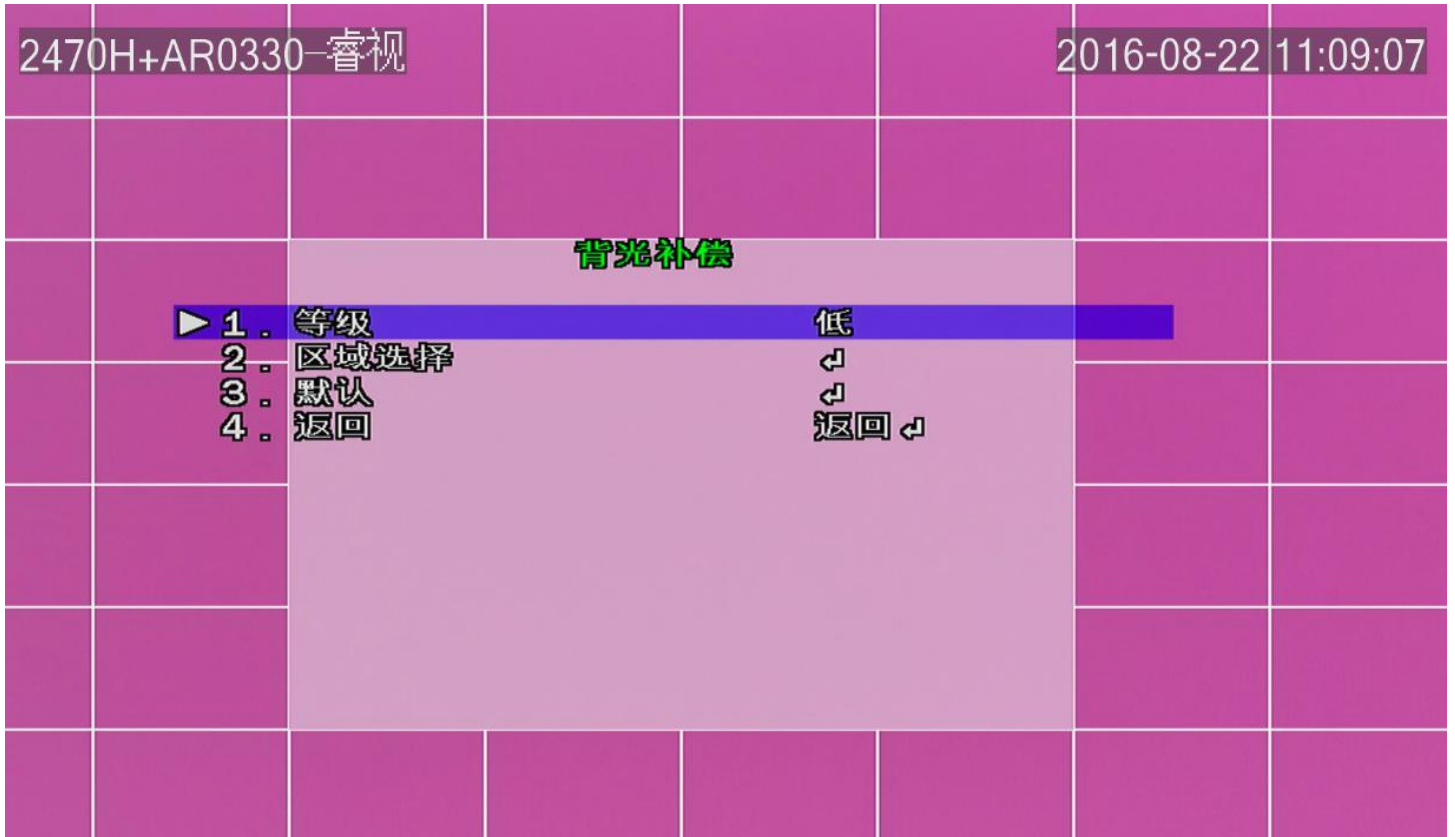
## 9、 OSD Menu(1)-Setting



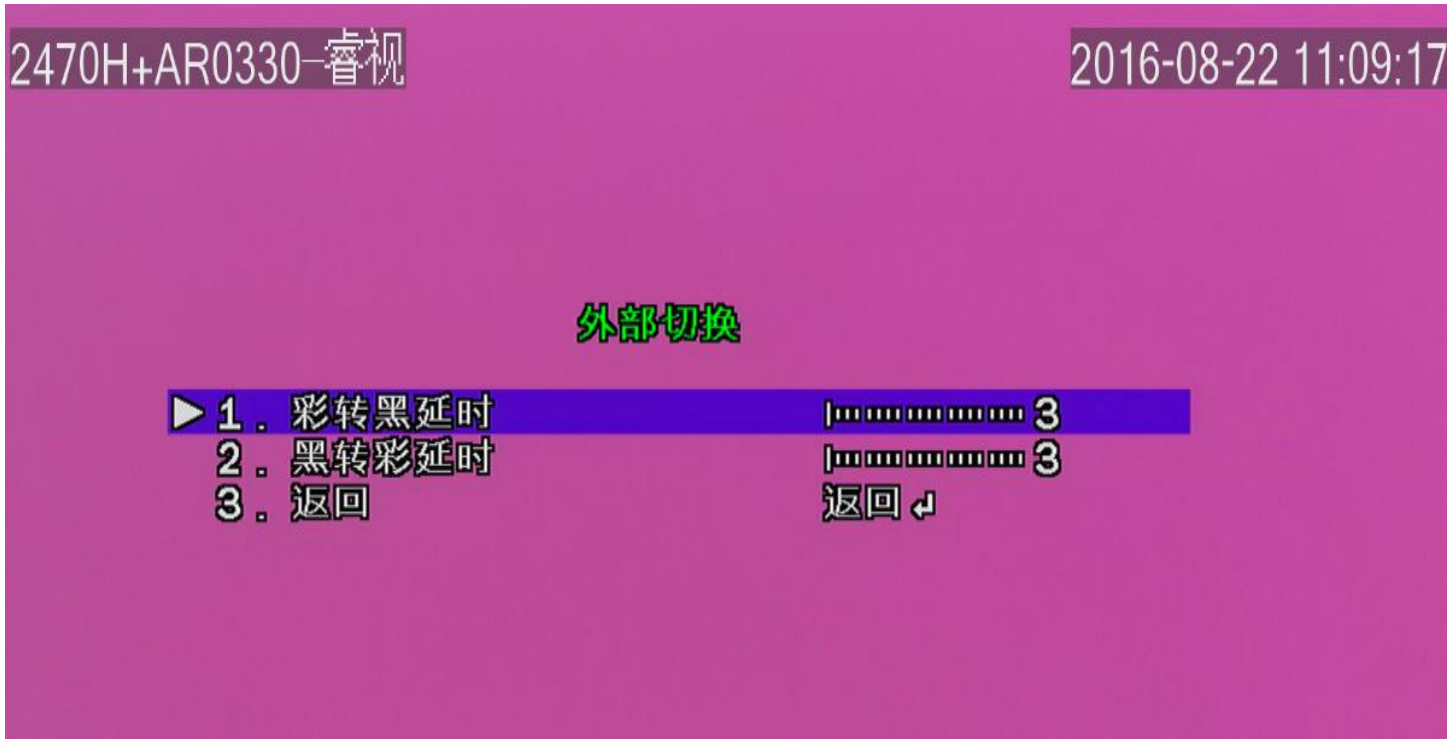




OSD Menu(4)- **BLC**



OSD Menu(5)- **EXTERNAL**



OSD Menu(6)- NR

2470H+AR0330-睿视

2016-08-22 11:09:25

**降噪**

- |           |      |
|-----------|------|
| ▶ 1. 2D降噪 | 中    |
| 2. 返回     | 返回 ↵ |

OSD Menu(7)- SPECIAL

2470H+AR0330-睿视

2016-08-22 11:09:32

**功能**

- |         |         |
|---------|---------|
| ▶ 1. 镜像 | 关       |
| 2. 隐私遮挡 | 关       |
| 3. DPC  | ↵       |
| 4. 语言   | CHN 2 ↵ |
| 5. 返回   | 返回 ↵    |

## OSD Menu(8)- ADJUST

2470H+AR0330-睿视

2016-08-22 11:09:42

## 影像调整

- |                |      |
|----------------|------|
| ▶ 1. 锐度        | 自动 ↵ |
| 2. 显示屏         | ↵    |
| 3. 边缘亮度补偿      | 关    |
| 4. OUTPUT MODE | ↵    |
| 5. 返回          | 返回 ↵ |

## Notice:

The content in the manual only provides guidance for users, our company will update the content in the instructions depending on the product function enhancing or changing, and we will improve or update the software functions described in the manual. The updated content will be explained in new edition manual, without notice.



**10、 Contact us:**

**SHENZHEN RUISSION TECHNOLOGY CO.,LTD**

Tel: (086) 0755-85225969/ 659/949/156 Fax: (086) 0755-85225809

Website: [www.ruision.com](http://www.ruision.com) Email: info@ruision.com

Add: 2/F, 3/F, 4/F, Bldg D, Weiyulong industrial park, No.16 North Huancheng Rd, Bantian, Longgang, Shenzhen, China

**Pacific Market Shop**

Address: Shop No. 1A261-262 Pacific market, HuaQiang North, Futian district, Shenzhen

Tel: (086) 0755-82778606

**Official wechat: szruision**

