

Specification

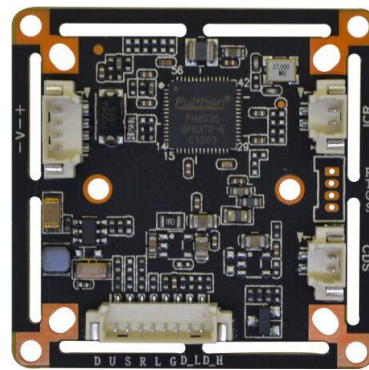
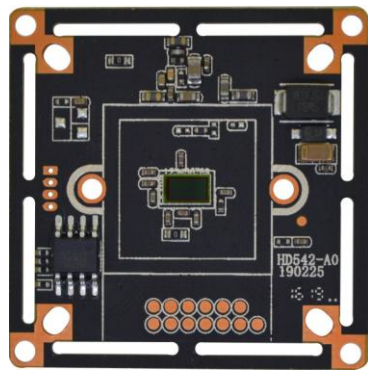
1、 Name: AHD mega HD Module

2、 Model No: RS-HD542-A0 series (4 in 1)

3、 Technical characteristics:

- 3.1、 SP140A image sensor, AHD/TVI/CVI/CVBS output, effective resolution is up to 1280*720;
- 3.2、 OSD support 12 different languages, support exposure/white balance/image enhancement/BLC etc;
- 3.3、 use FH8535 DSP, with OSD function(color/black-white, PAL/NTSC switch);
- 3.4、 AGC type, day-night effect is distinct, various day-night mode can be switched by OSD freely;
- 3.5、 support UTC function, Support brightness/sharpness/contrast/saturability adjustment (Pls note the value level for day and night is different, can change separately)
- 3.6、 power(600w)video(2kv)dual-lighting design, OSP antioxidant PCB, size 32*38 dual-board.

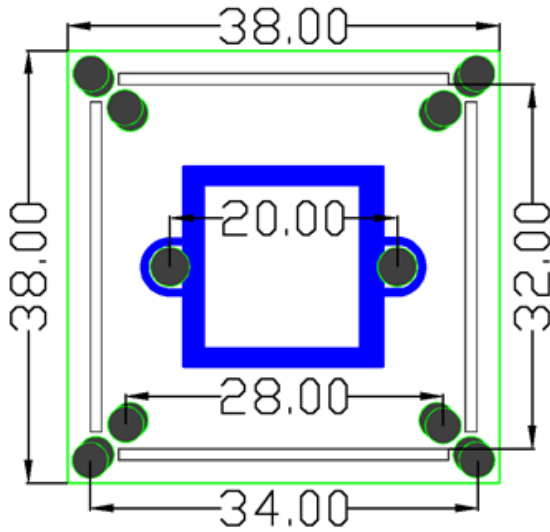
4、 Picture:



5、 product parameter:

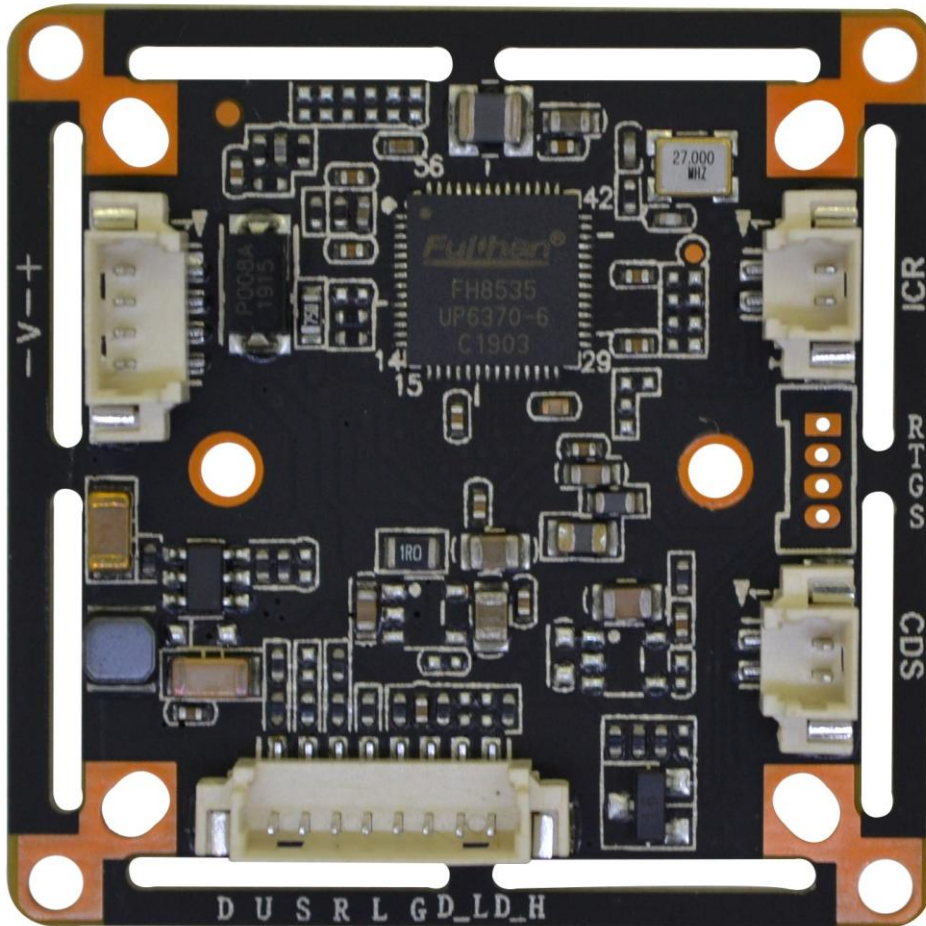
image sensor	1/4 SP140A
resolution	1280 (H) x 720 (V)
effective pixels	1 MP
signal system	PAL/NTSC (OSD switch)
day-night mode	external control(default)/auto/color/black-white (OSD switch)
S/N ratio	≥50dB
lowest illumination	0.1LUX
BLC	adjustable
AES	AUTO
AWB	AUTO
IR control input voltage	OFF(DC 0V) / ON:DC 3V-8V
OSD language(12)	English/Simple Chinese /Traditional Chinese/ Russian/ Spanish/Polish/ French/Italian/Portuguese/Japanese/Korean/Greek
Video output	AHD/TVI/CVI/CVBS
Video record occupation	1min≈38MB (4mm lens)
Working voltage	DC12V/60mA ±6mA(wide voltage 9V-18V)
Working environment	-20℃ --- 50℃

6、 product structure and wiring definition diagram:



term : ICR_A/B: IR-CUT
CDS_IN: IRCUT LED input

+ (红) 12V
- (黑) 地
V (黄) 视频输出
- (黑) 地



ICR_A
ICR_B

CDS_IN
灯板光敏输入

D_H
D_L
GND (棕) 地线
LEFT (白) 左
RIGHT (绿) 右
ENSET (紫) 确认
UP (灰) 上
DOWN (橙) 下

7、 Product structure description:

(1) RS-HD542-A0 the power connector 1.25*4pin.

8、 OSD function description:

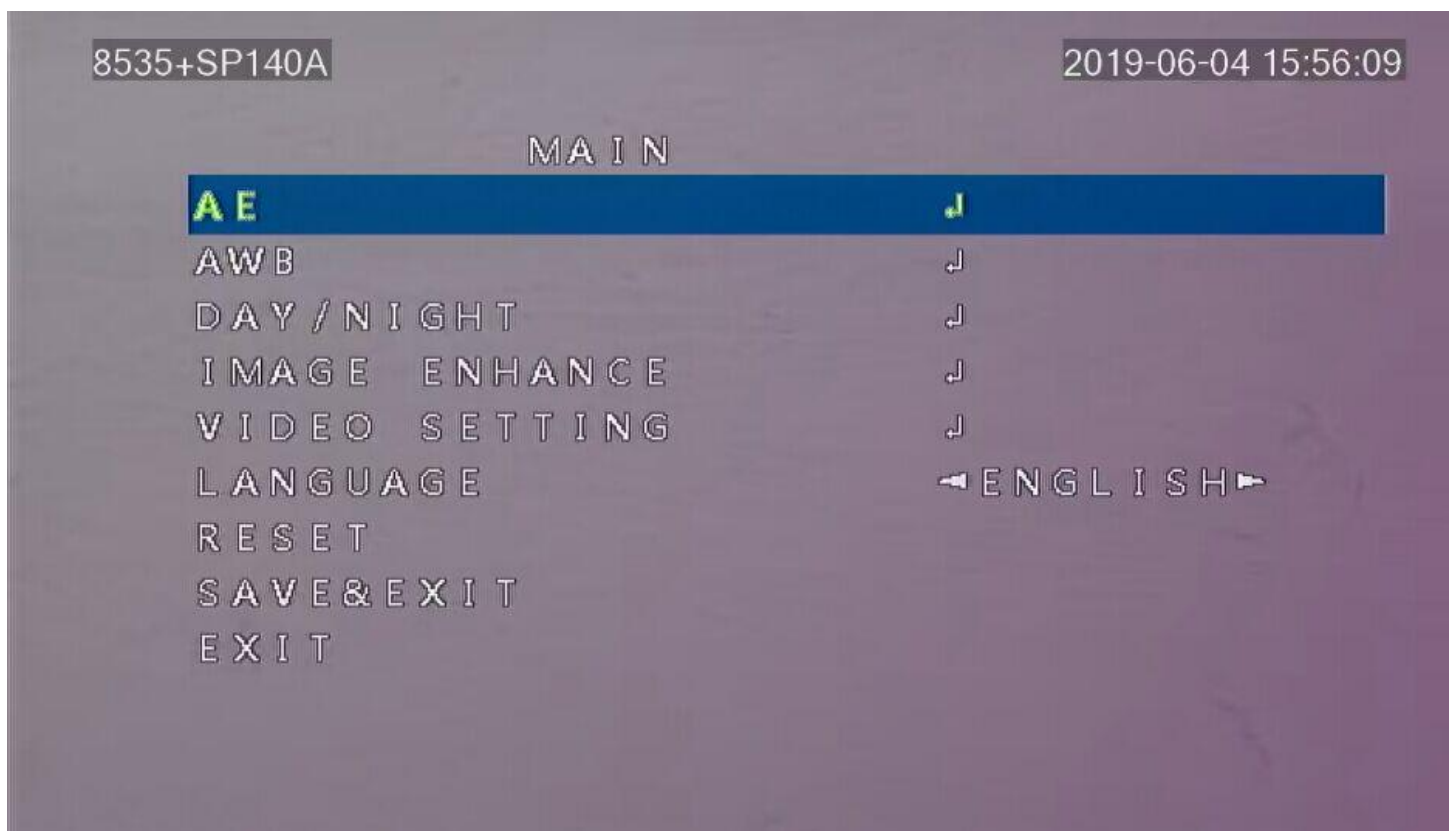
(1) PAL/NTSC Switch (720P 25fps is Pal; 720P 30fps is NTSC) Enter into OSD menu,, click (video setting) to enter and choose Standard (720P 25, 720P 30) and then click: Apply & Reboot to confirm P/N switch (Default is Pal)

(2)4 in 1 switch (shortcut switch mode):

1. Go to main menu, and click “Video setting” to enter and choose (CVI/TVI/CVBS/AHD)

After that, click Apply&Reboot” to confirm

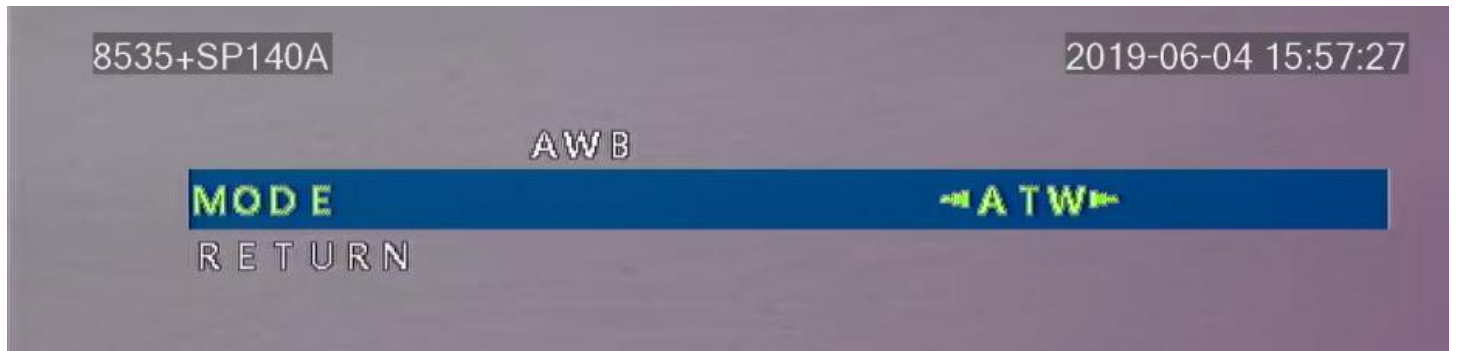
9、 OSD function show(1)-main menu



OSD function show(2)-exposure



OSD function show(3)-white balance



OSD function show(4)-day-night switch



OSD function show(5)-image enhance**OSD function show(6)-video setting****Notice:**

The content in the manual only provides guidance for users, our company will update the content in the instructions depending on the product function enhancing or changing, and we will improve or update the software functions described in the manual. The updated content will be explained in new edition manual, without notice.

10、 Contact US:

SHENZHEN RUISSION TECHNOLOGY CO.,LTD

Tel: (086) 0755-85225969/ 659/949/156 Fax: (086) 0755-85225809

Website: www.ruision.com Email: info@ruision.com

Add: 2/F, 3/F, 4/F, Bldg D, Weiyulong industrial park, No.16 North Huancheng Rd, Bantian, Longgang, Shenzhen, China

Pacific Market Shop

Address: Shop No. 1A261-262 Pacific market, HuaQiang North, Futian district, Shenzhen

Tel: (086) 0755-82778606

Official wechat: szruision

